

BLUE MOON

RICHARD RODGERS

(THEME)

Ustic Bass

Ustic Bass

4

8

11

14

18

21

24

27

Chords: E^bΔ7, C-7, F-7, B^b7, D^b9, B^b9, G-7, C-7, F-7, B^b7, E^bΔ7, D^b9, C-7, B^b9, B^b7, F-7, B^b7, E^bΔ7, C7, F-7, B^b7, E^bΔ7, A^b-7, D^b7, G^bΔ7, F-7, B^b7, C-7, F-7, B^b7, D^b9, C-7, F-7, B^b7, G-7, C-7, F-7, B^b7, D^b9, C-7.

Triplet in measure 11.

Blue Moon

31 B^9 B_7 E_7^{Δ}

34 (ADLIB CHORUS 1)

37

40

43

46

49

52

55

58

Blue Moon

61

3 3 3 3 3

(CHORUS 2 - 02:01)

64

67

70

73

76

79

82

85

88

Blue Moon

91



94



(BASS SOLO - 02:59)

97



100



103



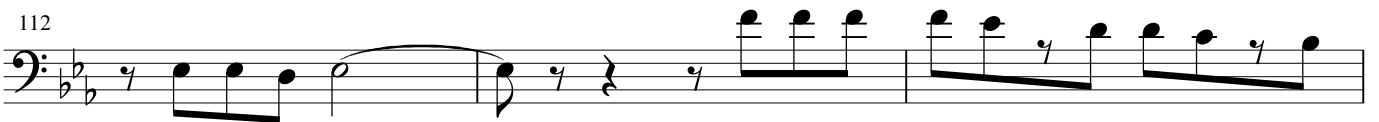
106



109



112



115



118



Blue Moon

121

3

124

3

127

3

130 (THEME)

3

134

137

3 3 3 3

140

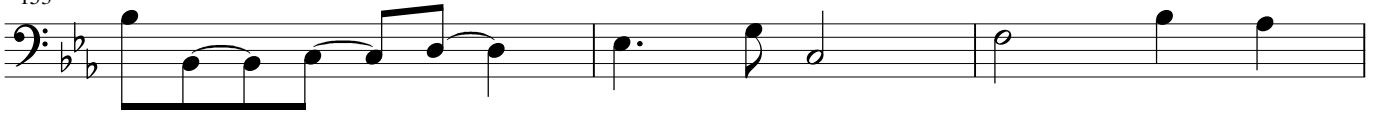
144

147

150

Blue Moon

153



156



160



163



166

